

THE GLENVIEW



More than a house – A Home

There's nothing like waking up every morning in a sunny, peaceful home designed just for you. The Glenview's versatile layout combines comfort and modern design with spacious living areas and a generous master zone for pure enjoyment.

This stunning 319m² homestead will grow with your family, offering up to five spacious bedrooms including a luxurious master suite. The breath-taking veranda wraps around the entire residence to soak up 360° of sunshine. With airy rooms exposed to beautiful views, including a dining area, family lounge, study, and kitchen – there's plenty of space to build memories together. The Glenview is flexible, functional, and aesthetically beautiful.

- ▲ AVAILABLE IN 2, 3, 4 OR 5 BEDROOM LAYOUTS
- ▲ WRAP-AROUND PROTECTION FROM THE ELEMENTS
- ▲ HOMESTEAD STYLE WITH BIG KITCHEN, STORAGE AND PANTRY

All our core designs are:

fully **CUSTOMISABLE**

ASK AWAY 

Email: enquiries@kithomes.com.au

Website: www.kithomes.com.au

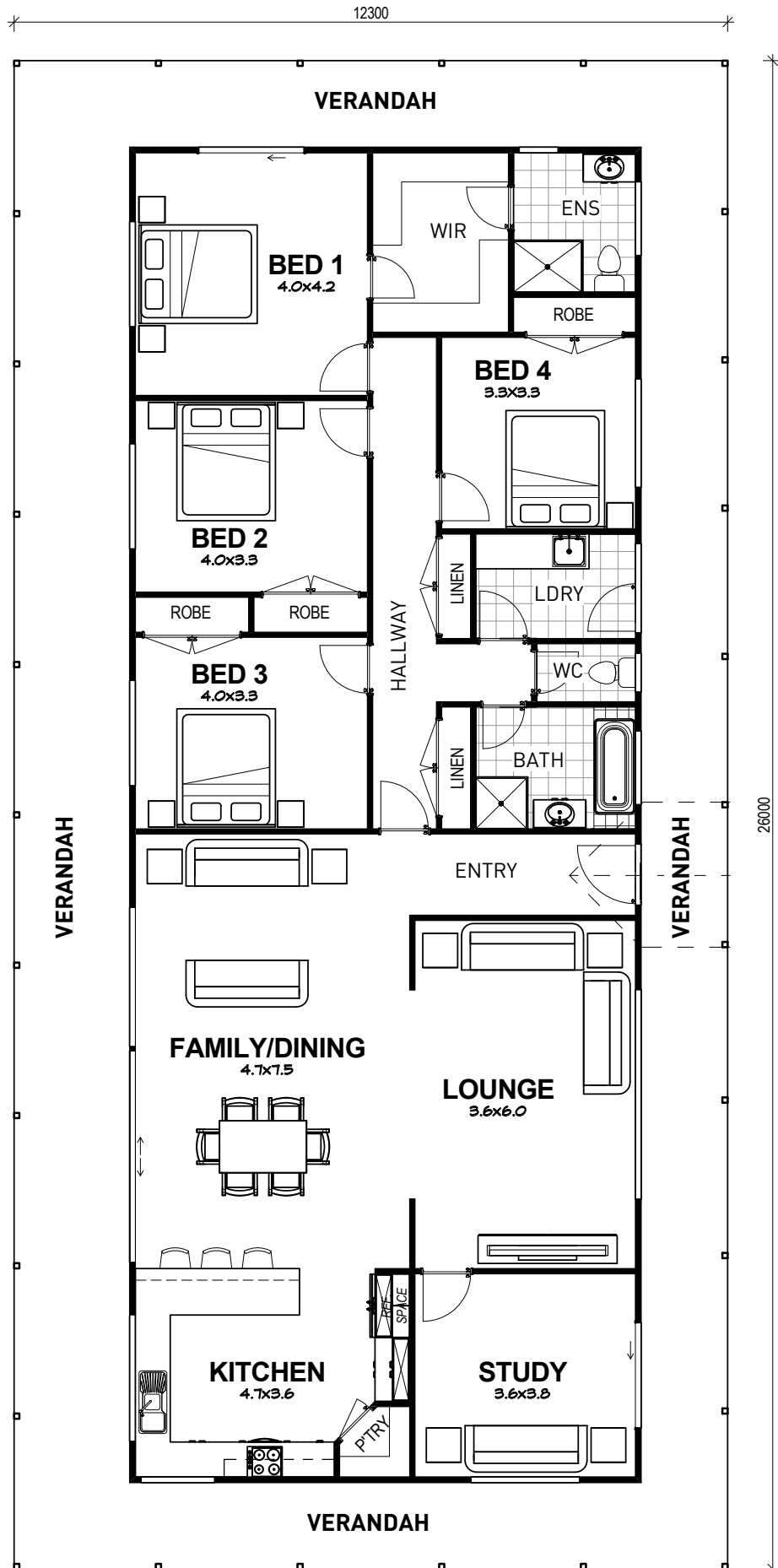


(07) 5641 20 20

CLASSIC KIT HOMES
Beautiful homes made *easy*

THE GLENVIEW

4 BEDROOM



AREA - FLOOR SCHEDULE		
Name	Area (m2)	Squares
LIVING	202.40	21.78
VERANDAH	117.40	12.63
TOTAL AREA	319.80	34.41