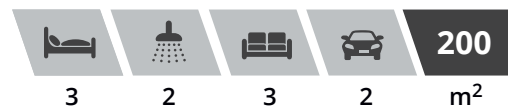


THE RUBYVALE



Space to stretch out

If you like to make an impression, the Rubyvale will not disappoint. Catering for today's modern lifestyle with generous entertainment areas and open plan living, Rubyvale definitely has the wow factor.

Dual bi-fold doors, extended rotunda, spacious ensuite (including bath), walk in robe, private balcony and dedicated media room are all standard features of the three bedroom Rubyvale.

Designed with casual living in mind, the wide deck and private balcony seamlessly bring the outdoors in. Boasting two bathrooms, large carport and the option to further customise the design, The Rubyvale is a contemporary home tailored to today's lifestyle.

- ▲ LARGE ENSUITE WITH SPACE FOR FREE STANDING BATH
- ▲ OPTIONS FOR 2 OR 4, OR ADDITION OF A STUDY
- ▲ BI-FOLD DOORS TO BEAUTIFUL ROTUNDA VERANDAH

All our core designs are:

fully **CUSTOMISABLE**

ASK AWAY



Email: enquiries@kithomes.com.au

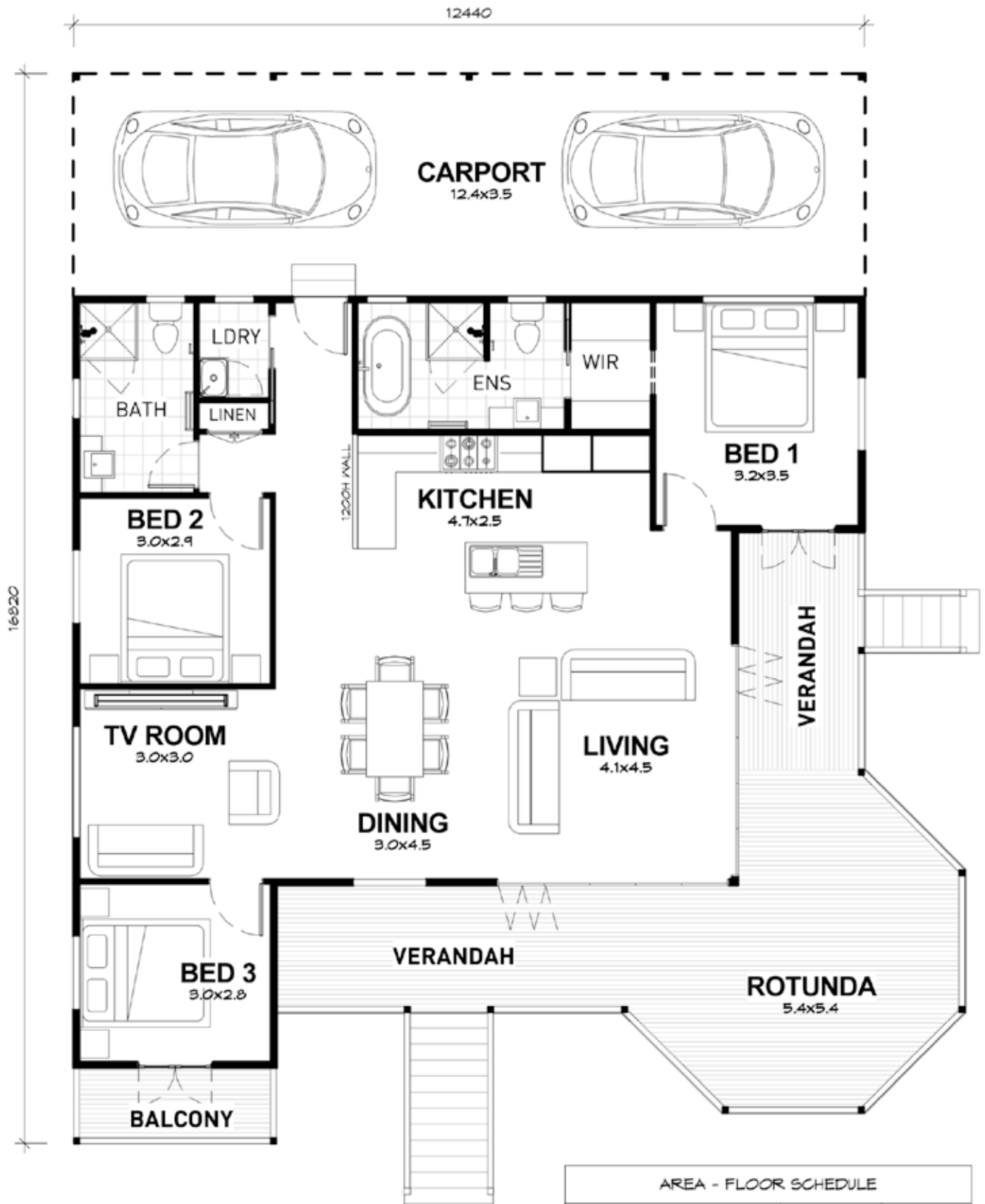
Website: www.kithomes.com.au



(07) 5641 20 20

CLASSIC KIT HOMES
Beautiful homes made *easy*

THE RUBYVALE



| AREA - FLOOR SCHEDULE | | |
|-----------------------|------------------------|--------------|
| Name | Area (m ²) | Squares |
| FLOOR LIVING | 113.08 | 12.17 |
| CARPORT | 43.54 | 4.68 |
| VERANDAH | 40.47 | 4.35 |
| BALCONY | 3.82 | 0.41 |
| TOTAL AREA | 200.90 | 21.62 |